



OPTIMA FIDE

Optima Fide — accredited residential recovery center in Moldova

A practical partner and donor brief about the mission, accreditation, residential program, infrastructure and ways to support the work.

Location: Goianul Nou, Stăuceni, Republic of Moldova. Residential capacity: 20 places.

Mission of the foundation

Optima Fide supports people and families affected by addiction through a structured residential recovery environment, daily rhythm, community support, spiritual accompaniment without pressure and practical reintegration work.

- Provide a safe residential environment away from destructive habits.
- Support responsibility, work, family relationships and stable daily structure.
- Cooperate with families, churches, social services, specialists, donors and community partners.

Accreditation



The center presents a state accreditation certificate for rehabilitation through a therapeutic community for consumers of psychoactive substances and substitution therapy patients.

Residential recovery program

- Accommodation, meals and a predictable daily rhythm.
- Group meetings, individual conversations, responsibilities and community life.
- Family orientation and support during the process.
- Optional spiritual support, prayer, silence and meaning without pressure.
- Preparation for reintegration into stable daily life.

Medical boundary: Medical consultations, tests and examinations are arranged through specialized professionals and institutions when needed. Optima Fide does not replace emergency medical care, inpatient psychiatry or emergency detoxification.

Infrastructure of the center

- Residential building in Goianul Nou, Stăuceni.
- 20 residential places.
- Dining and common spaces.
- Outdoor courtyard and activity areas.
- Spaces for group meetings and daily community rhythm.

Team

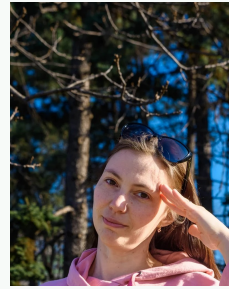
The team combines organizational experience, participant support, family communication and daily accompaniment.



Fr. Igor Plevschi

Foundation president / spiritual accompaniment

Coordinates the mission, partnerships and the spiritual dimension of the program.



Anastasia Plevscaia

Psychologist / participant support

Provides psychological support and helps participants engage in the recovery process.



Ruslan Magari

Center manager / daily organization

Responsible for order, stay conditions and practical daily life in the center.



Oksana Harbolinscaia

Program coordinator / family communication

Supports communication with participants, families and the accompaniment process.



Tudor Rotaru

Peer-to-peer consultant

Supports participants through personal experience, communication and practical accompaniment.

Results and current scale

- 19,000+ consultations provided over the years.
- 500+ people received help.
- 20 residential places in the center.
- State accreditation and a concrete residential location in Moldova.

Partnership opportunities

- Support residential places, meals, heating, utilities and daily operations.
- Partner on family support, reintegration, training and community outreach.
- Help improve infrastructure, equipment and transportation.
- Cooperate through churches, social services, foundations and professional networks.

Bank details and contacts

Account name: Fundatia Optima Fide

IBAN: MD63VI000000002224729306

Bank: B.C. Victoriabank S.A.

SWIFT: VICBMD2X

Fiscal code: 1012620008338

Phone: +373 79 002 064

Email: optimafide.info@gmail.com

Website: <https://recovery.optimafide.md/>

Address: str. Gloriei nr. 4, s. Goianul Nou, or. Stăuceni, Republic of Moldova